

# TEKNOFLOR®

HIGH PERFORMANCE FLOORING



NO WAX  
NO BUFF  
EASY TO  
CLEAN

## DESIGNSCAPES HPD™

COMMERCIAL RESILIENT SHEET • HIGH PERFORMANCE DESIGN



# CLEAN. UNIQUE. FRESH.

**TEKNOFLOR® DesignsCAPES HPD™ Commercial Resilient Sheet Flooring** offers a fresh look and a unique perspective to the **Teknoflor** brand of commercial sheet flooring with three modern, creative and highly functional designs. Carrying the brand's trademark, No Wax, No Buff features, **Designscapes HPD** is made of 100% virgin vinyl and without any phthalates. Used as a complementary product or standing alone, its creativity and versatility are sure to impress! For more information, contact your Teknoflor sales representative.



DURABLE AND LOW  
MAINTENANCE

ENVIRONMENTALLY  
FRIENDLY

SAFE

OVERALL THICKNESS

WARRANTY

APPLICATIONS

- **No Wax, No Buff**, and no sealers or finishes needed; easily cleaned by damp mopping or auto-scrubbing
- Thicker 2.3mm gauge for enhanced performance in heavy traffic areas
- Maintenance savings result in investment payback in approximately two years
  
- No buff floors mean no bacteria, dust or wax particles are thrown into the air during cleaning
- No odors from floor finishes or strippers; no wax flushed into sewer system
- Complies with REACH requirements for Substances of Very High Concern
- Made with 100% Virgin Vinyl
- Floorscore Certified
  
- ADA Compliant
- Meets fire test standards and is suitable for use in emergency exits and corridors
- Approved for emergency egress areas - NFPA 101 and NFPA 99
  
- 2.3mm (0.091")
  
- 12-year commercial warranty
  
- Ideal for Healthcare, Senior Living, Retail, Corporate/Office, Academic and Hospitality Environments



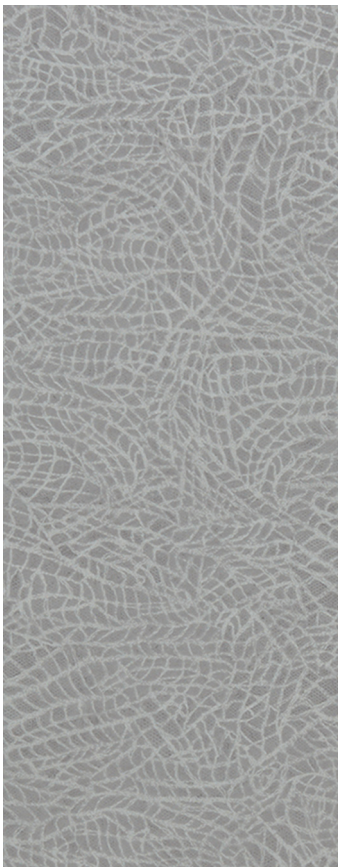
DESIGNSCAPES HPD™  
COMMERCIAL RESILIENT SHEET • HIGH PERFORMANCE DESIGN

TEKNOFLOR®



# GREAT CATCH

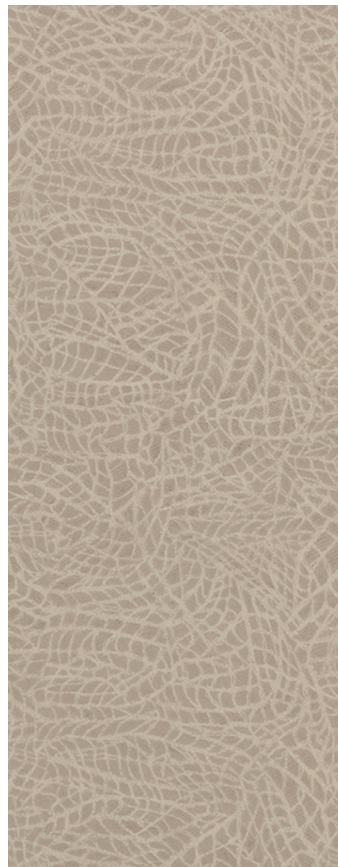
Great Catch was designed to emulate the fishing nets found alongside your favorite coastal town. With beautiful contrast and unexpected patterns, each colorway in the collection will create a space as unique as every catch.



1381 Shameless



1384 Ageless



1383 Effortless

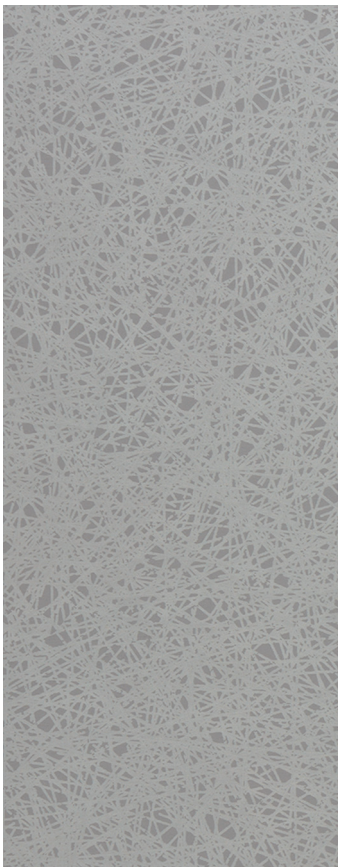


1382 Fearless



# NESTING

Nesting was inspired by the artful nests that birds design each season. With varying widths and lines inspired by sticks and brush, the design brings a strong geometric pattern that will add a unique design element to any space.



1371 Little Birdie



1373 Hummingbird



1372 Early Bird



1374 Mama Bird



# FIELDS *of*

Fields Of was inspired by the “fly over states” and the beautiful, soothing designs of the fields they carry. The design offers a soft and calm expression while provoking interest to the details of its patterns, making it both a flexible complementary design and a jaw dropping stand out.



1363 Dreams



1362 Gold



1361 Sun



1364 Honor



# TEKNOFLOR® DESIGNSCAPES HPD™

COMMERCIAL RESILIENT SHEET • HIGH PERFORMANCE DESIGN

PRODUCT DATA			
STANDARD SPECIFICATION	ASTM F1303 - Meets or exceeds requirements	DIMENSIONS	6' Wide (1.82m) x 75' Long (22.86m)
CLASSIFICATION	Type I, Grade 1	ROLL SIZE	50 SY
BACKING CLASS	Class B Fused Non-Cushioned	WEIGHT	320 lbs.
COMPOSITION	Virgin PVC, No outside recycled content and Phthalate Free	ROLLS / PALLET	12
TOP COAT	HP Urethane Coating with Ceramic Bead	PALLETS / CONTAINER	10
WEAR LAYER THICKNESS	0.50 mm (20 mils or 0.020 in)	WARRANTY	12-Year
OVERALL THICKNESS	2.3mm (0.091")		

PERFORMANCE SPECIFICATIONS	TEST METHOD	STANDARD REQUIREMENT	RESULT
CHEMICAL RESISTANCE	ASTM F925	0- No change or 1 - Slight Change	0 - No Change
HEAT STABILITY COLOR CHANGE	ASTM F1514	$\Delta E < 8.0$ avg. @ 7 days	Passes
LIGHT STABILITY COLOR CHANGE	ASTM F1515	$\Delta E < 8.0$ avg. @ 300 hrs.	Passes
SHORT TERM INDENTATION	ASTM F1914	Max. Residual Indent 0.012 in. @50 lbs.	0.006 in.
STATIC LOAD LIMIT	ASTM F970	250 psi $\leq$ 0.005" Residual Indentation	Exceeds Requirements 1,000 psi at maximum limit
FLOORSCORE	Certified		SCS-FS-03202
HEAVY METALS	ASTM F963		No concern with Heavy Metals
ABRASION RESISTANCE	ASTM D4060	H18 Wheel & 1 kg mass applied	28,000 cycles to see effect on design layer
CASTOR CHAIR TEST	Castor Chair Test	198 lbs. Load 25,000 cycles / Rating Scale 1-5 / 5-No Change / 1 - Severe Change	25,000 cycles 5 - No Change
REACH - SUBSTANCES OF VERY HIGH CONCERN (SVHC)	Test for EU REACH Chemicals of concern	SVHC's tested must be less than 0.1% by product weight	Passes

SAFETY PERFORMANCE	TEST METHOD	STANDARD REQUIREMENT	RESULT
STATIC COEFFICIENT OF FRICTION (SCOF)	D2047	$\geq 0.5$ SCOF Dry	$\geq 0.6$ SCOF
DYNAMIC COEFFICIENT OF FRICTION (DCOF)	ANSI B101.3	Low/Acceptable/High Traction - Wet DCOF	High Traction Wet DCOF
CRITICAL RADIANT FLUX	E648	Class I: $\geq 0.45$ w/cm <sup>2</sup> Class II: $\geq 0.22$ w/cm <sup>2</sup>	Class I
SMOKE GENERATION	E662	<450 Flaming	<450 Flaming & Non-Flaming
SURFACE BURNING CHARACTERISTICS	E84	Class A, B & C	Class B

**APPROVED FOR EMERGENCY EGRESS AREAS - NFPA 101 AND NFPA 99**



Schedule  
GS-27F-0504H • GS-27F-0036V  
GS-27F-0015V



TEKNOFLOR®